

a premium residential development by
PARIJATHA HOMES & DEVELOPERS

Parijatha's
Armor City
AN AFFORDABLE LUXURY APARTMENTS
@ARMOOR

Armor City is an insightfully planned architecture housing luxurious 2 & 3 BHK residential spaces. Strategically located at Armoor in Nizamabad District, this apartment features a brilliant elevation of C+G+5 floors.

All the residential units in the two well-designed blocks are meticulously designed with amenities to make your living comfortable and complete. Your every day will be filled with Plenty and Prosperity.




BUILDERS & DEVELOPERS


PARIJATHA
HOMES & DEVELOPERS PVT. LTD.
The Honest Realtors
An ISO 9001:2005 Company

Corporate Office : 1st Floor, Meenakshi House, Road No. 7,
Beside Ratnadeep Supermarket, Banjara Hills, Hyderabad - 34.
Website : www.parijathahomes.com
Contact : +91 40 4346 2069 / parijathahomes45@gmail.com

TOLL FREE NO. - 1800 5720 599

ARCHITECTURAL
CONSULTANTS

 **slick architects**
Architectures & Interiors

Swastik Plaza, 401,
Above Himalaya Book World,
Sanjeeva Reddy Nagar, Hyderabad,
Telangana State - 500 038, INDIA.
www.slickarchitects.com

CONCEPT,
DESIGN & PRINT
CRYSTAL
COMMUNICATIONS
M - +91 92461 53944

For Details Please contact :

**An Elite
Residential
Project
in a Prime
& Promising
Locality**

Parijatha's
Armor City
AFFORDABLE LUXURY APARTMENTS
@ARMOOR

Parijatha's
Armor City
AFFORDABLE LUXURY APARTMENTS
@ARMOOR

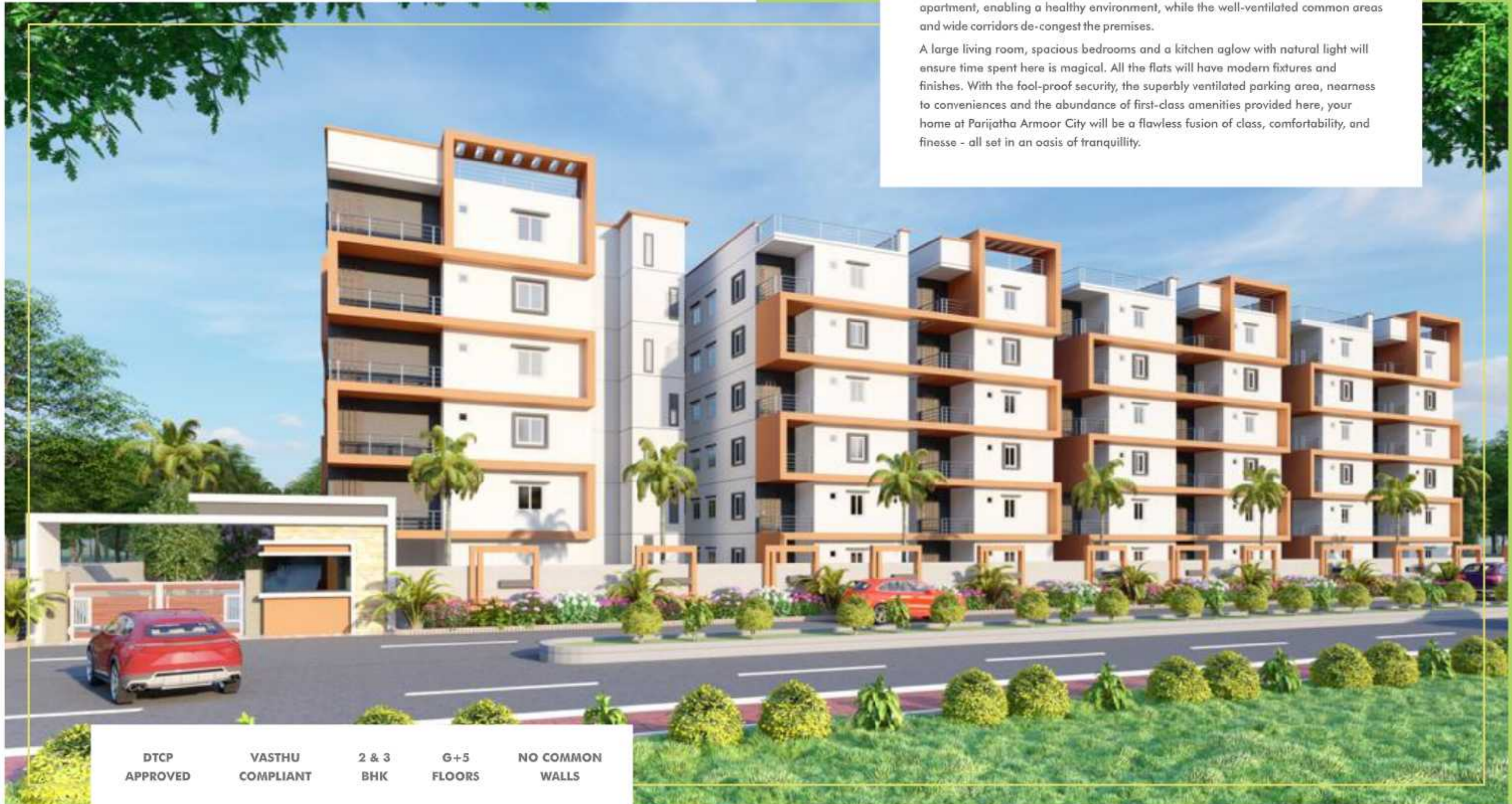
Your Luxury Home

Filled with Splendour, Security & Serenity

Standing tall with a majestic elevation in the breathtaking suburb of Armoor in the Nizamabad district of Telangana is Parijatha Armor City. This ultra-premium residential complex of two blocks features C+G+5 floors of 2 & 3-BHK homes.

The thoughtful space design facilitates ample sunshine and cool breeze into the apartment, enabling a healthy environment, while the well-ventilated common areas and wide corridors de-congest the premises.

A large living room, spacious bedrooms and a kitchen aglow with natural light will ensure time spent here is magical. All the flats will have modern fixtures and finishes. With the fool-proof security, the superbly ventilated parking area, nearness to conveniences and the abundance of first-class amenities provided here, your home at Parijatha Armor City will be a flawless fusion of class, comfortability, and finesse - all set in an oasis of tranquillity.



DTCP
APPROVED

VASTHU
COMPLIANT

2 & 3
BHK

G+5
FLOORS

NO COMMON
WALLS



Your Every Day

Filled with Entertaining & Energetic Activities

Parijatha Armoor City is a perfectly designed structure. The developers have mastered the art of pampering their investors with high-quality facilities. The exclusive recreational area at Parijatha Armoor City sets the stage for unforgettable memories and enriching family relationships.

The clubhouse interiors resonate with elegance and inspiration. It offers you a host of recreational options that will ensure you meet your fitness and rejuvenation quota. Go for a stroll within the beautifully landscaped aroma and bamboo gardens. Or read a book to your toddler in the reading garden. Play a game or two with friends or swim a few rejuvenating laps in the well maintained pool. Festivals and functions come alive at the multipurpose lawn. So enjoy and experience happy times with your family and friends.

Parijatha's
Armoor City
AFFORDABLE LUXURY APARTMENTS
@ARMOOR

Here's why PARIJATHA ARMOOR CITY should be your first choice for an investment!

- Clear Title
- Immediate Registration
- Hassle-free Transactions
- Pollution-free Environment
- 12+ Amenities
- School Bus Pick-up
- Swimming Pool
- Clubhouse
- Clinic For Emergencies
- Gated Community
- On-time Delivery
- Branded Fittings & Fixtures
- 24x7 Security
- Well-lit Car Parking
- Creche For your Toddler
- Multipurpose Lawn



*An opportunity for your family to
interact with the natural world !*

Parijatha Armoor City has beautifully manicured lawns with bamboos, exotic palms, and vivid and fragrant flowering plants, as well as a children's play area and a reading nook.



Pool



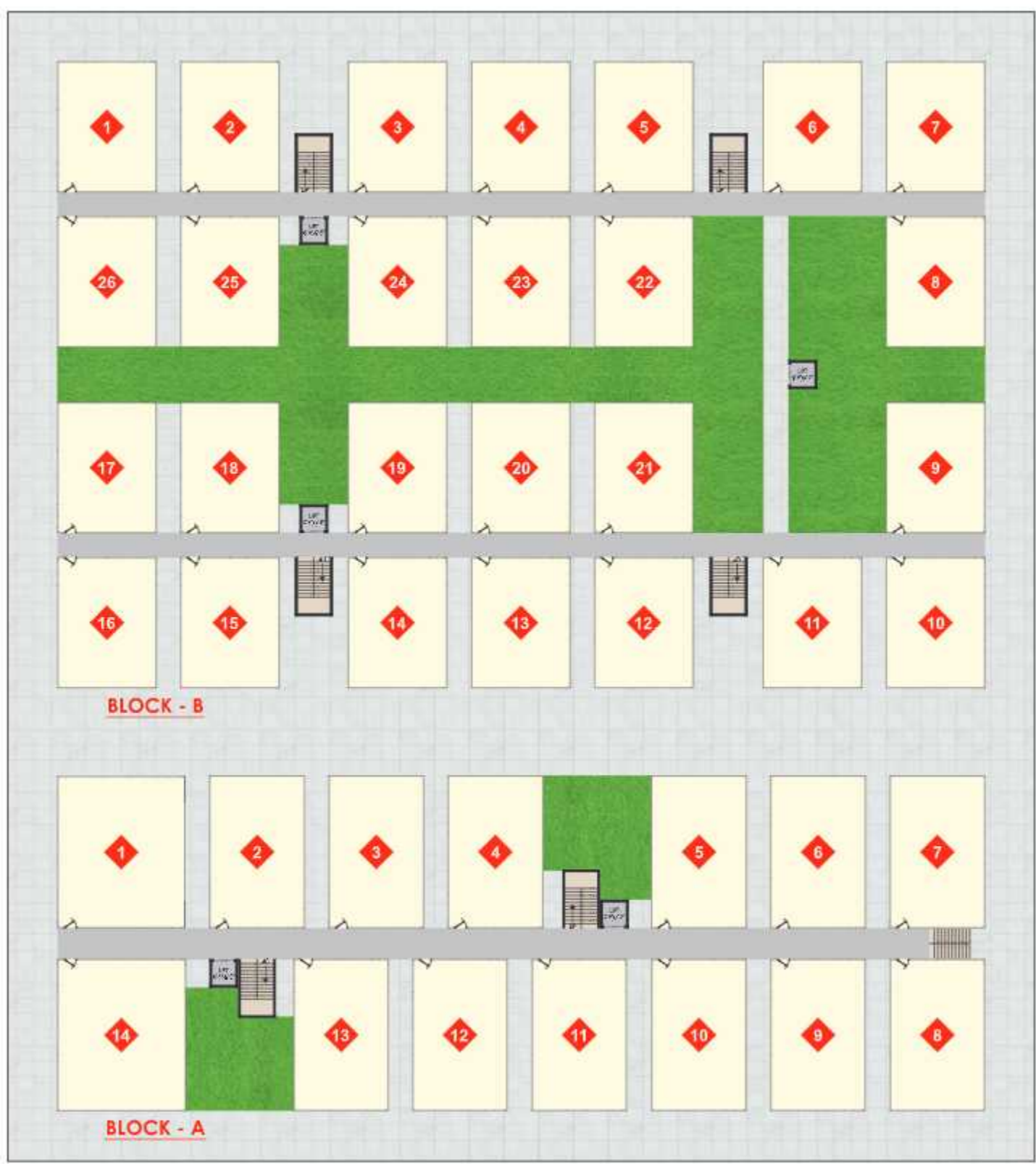
Creche



-33'0" WIDE ROAD-

Indulge In The Freedom

to integrate your home, work & leisure activities



-120'0" WIDE ROAD-

TYPICAL FLOOR PLAN



WEST FACE		BLOCK - A	3 BHK
	1	PLINTH	880.00
		COMMON	220.00
		TOTAL AREA	1100.00



TYPICAL FLOOR PLAN



WEST FACE		BLOCK - A	2 BHK
	2, 3 4, 5 6, 7	PLINTH	880.00
		COMMON	220.00
		TOTAL AREA	1100.00

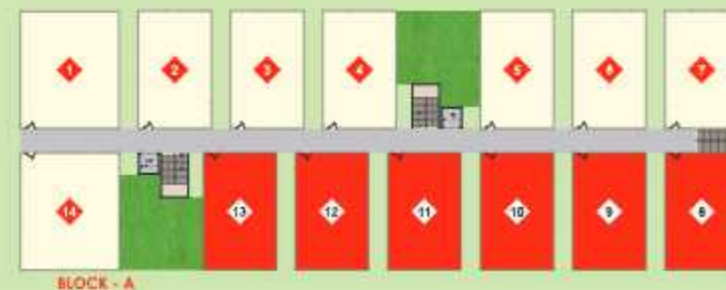


TYPICAL FLOOR PLAN

WEST FACE		BLOCK - A	3 BHK
	14	PLINTH	880.00
		COMMON	220.00
		TOTAL AREA	1100.00



WEST FACE		BLOCK - A	2 BHK
	8, 9 10, 11 12, 13	PLINTH	880.00
		COMMON	220.00
		TOTAL AREA	1100.00



TYPICAL FLOOR PLAN



TYPICAL FLOOR PLAN



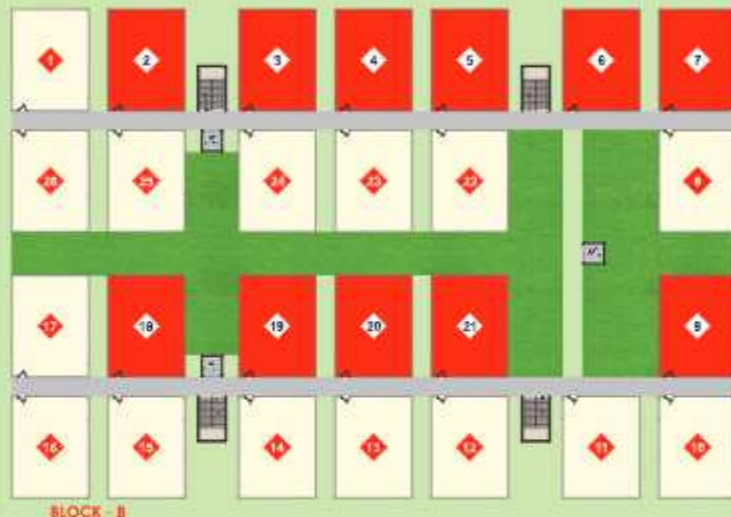
WEST FACE		BLOCK - B	2 BHK
	1, 17	PLINTH	880.00
		COMMON	220.00
		TOTAL AREA	1100.00



TYPICAL FLOOR PLAN

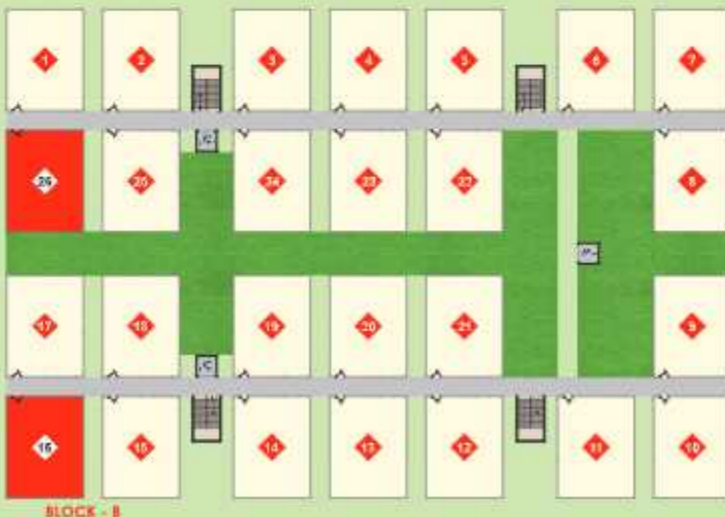


WEST FACE		BLOCK - B	2 BHK
	2, 3, 4 5, 6, 7 9, 18 19, 20 21	PLINTH	880.00
		COMMON	220.00
		TOTAL AREA	1100.00

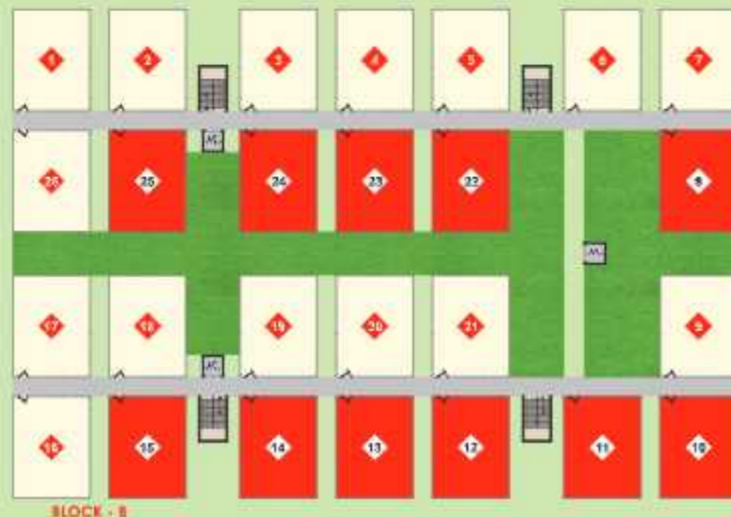


TYPICAL FLOOR PLAN

WEST FACE		BLOCK - B	2 BHK
	16, 26	PLINTH	880.00
		COMMON	220.00
		TOTAL AREA	1100.00

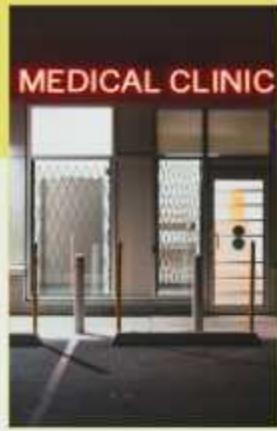


WEST FACE		BLOCK - B	2 BHK
	8, 10, 11 12, 13 14, 15 22, 23 24, 25	PLINTH	880.00
		COMMON	220.00
		TOTAL AREA	1100.00



TYPICAL FLOOR PLAN





A
Charming
Gated community
Of
Superior homes That You
Rightly Deserve



A Hassle-free Lifestyle

with high-quality materials & modern architectural technology

Foundation & Structure	: RCC framed structures.	Kitchen	: Granite Kitchen platform with stainless steel sink. Ceramic Tiles wall cladding up to height of 2' above the kitchen platform
Walls	: Good quality light weight red bricks / AAC blocks 4 1/2" thick for external 4 1/2" thick for internal walls.	Toilets	: Anti-skid ceramic flooring tiles. : Ceramic tiles for wall. Good quality sanitary wear. Good quality bath fittings in all toilets.
Doors		Water Supply	: Provision for both Municipal & Bore-well water.
Main Door	: Teak wood frame and shutter with spray polish.	Electrical	: Concealed copper wiring in conduits with provision for adequate electrical points in all rooms.
Internal Doors	: Teak wood frame and Designer flush doors.	Generator	: Power back up for lift, common areas.
Windows	: UPVC windows with safety grill	Security	: CCTV Intercom facility.
Painting		NOTE:	
External	: A combination of textured paint acrylic based paints in two coats of reputed (Asian or equivalent)		Amenities, car parking, municipal water connection, electricity, GST tax, registration, solar panel and any other non mentioned items in agreement of sale are to be borne by the purchaser.
Internal	: Smooth finish with Altek and emulsion paint.		
Flooring	: Vitrified tiles of reputed make.		
Common Area	: Non-slippery tiles in Common Area and Staircase		





ARMOOR RAILWAY STATION



NATIONAL HIGHWAY 44 & 63



DICHPALLI RAMALAYAM TEMPLE (25 km from Armoor)



SRI RAM SAGAR PROJECT (25 km from Armoor)



TURMERIC MARKET (NIZAMABAD)



Your Future Home Awaits

With excellent connectivity & convenience

It has always been the endeavour of Parijatha Homes & Developers Pvt. Ltd. to envision projects at accessible locations that are surrounded by all the essential amenities. Facing the National Highway 44, Parijatha Armoor City is one such superbly located residential project.

Armoor is one of the fastest-growing residential suburbs in the Nizamabad District of Telangana. Home to premier educational institutions, Armoor witnessed a steady influx of students and professionals from surrounding localities. Transport mediums are easy to find as this peaceful locality is well-connected by National Highway roads NH-44 (Asia Highway 43) and NH-63.

The nearest railway station is the Armoor railway station on the Peddapalli-Nizamabad section. The demand for Nizamabad variety turmeric in countries like UAE, Taiwan, UK, US markets has increased exponentially. Consequently, the rapid development of this agriculturally rich land promises to be an immensely rewarding investment opportunity.

Prime Location

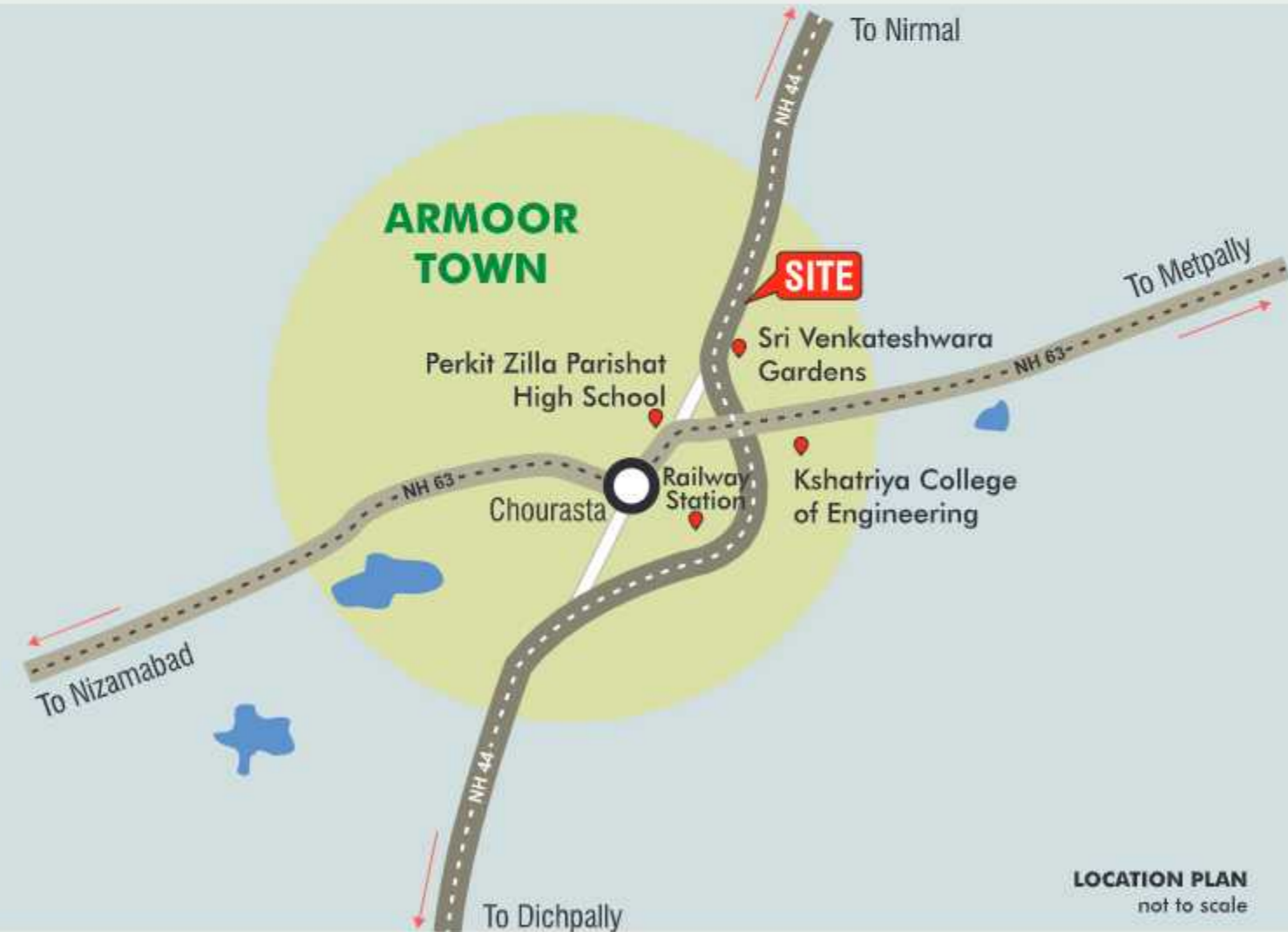
Excellent Connectivity

Developed Neighbourhood

Peaceful Environment

LOCATION HIGHLIGHTS

- Agriculturally Rich Land
- Project Beside AC Function Halls
- Near By Proposed Airport
- Near By Armoor Railway Station
- An Important Locality For Cultivation Of Turmeric
- Main Junction Of Two Highways NH-44 & NH-63
- Sri Navanatha Siddeshwara Sai Baba Temple
- World Famous Chicken Dish In Name Of Ankapur Chicken



LOCATION PLAN
not to scale