

a project by  
Parijatha Homes & Developers Pvt. Ltd.



# PARIJATHA ELITE

AT BACHARAM

An  
ISO 9001:2005  
Company



**hmda**  
Growing Global  
038188/GHT/R1/U6/  
HMDA/16082020

**TS RERA**  
No. P02400003096

A STRONG SENSE OF  
**TRANQUILITY**



PROVIDING INNOVATIVE  
HOUSING SOLUTIONS

The wisdom behind creating architectural marvels lie with a team that has an exceptional advantage in matters of skill, talent, experience and expertise. Parijatha Homes & Developers Pvt. Ltd. has been blessed with one such team whose tenacious focus is on creating remarkable ventures with excellent elevations and vastu compliant structures.

For the past decade, each project from Parijatha Homes & Developers Pvt. Ltd. has been an example of their commitment to excellence, timely delivery and more importantly, the satisfaction of their clients. The company's proficiency lies in identifying highly strategic locations and creating brilliant homes, commercial and functional office spaces using state-of-the-art infrastructure and cutting edge technology.

Parijatha Homes & Developers Pvt. Ltd. delivers high-end buildings with affordable price tags. Their eco-friendly methodology and innovative practices has cemented their position amongst the finest in the real estate and construction business.



## A PROJECT THAT OFFERS AN IDEAL SHOPPING EXPERIENCE

Parijatha Elite is an ensemble of luxurious living and commercial spaces. Located at Bacharam, This complex opens new terrains for your residential and business needs.

The magnificent architecture of Parijatha Elite revolutionizes your living experience with an intelligent combination of aesthetic design, new-age retail spaces, innovative facilities, functional efficiencies, and a flawless location. This project offers excellent connectivity and locational advantage to its residents and visitors.

It is a world-class integrated community offering the finest living experience to those who chose exclusivity.





**PARIJATHA**  
**ELITE**  
AT BACHARAM

PROVIDING PEACEFULL  
HOUSING OPTIONS

AN APARTMENT ISN'T JUST A HOME.  
IT IS A CELEBRATION OF LIFE.

Conceived & designed to create a world-class living habitat, Parijatha Elite at Bacharam, set on 5 acres 34 guntas is a stunning apartment complex of Stilt+5 floors. Set amidst landscaped greens, this magnificent 390 residential flats comprises of residential blocks of 2, and 3 bedroom homes, 1 commercial building & 1 clubhouse that extrude exclusivity.

Indulge in the state-of-the-art amenities provided here. A contemporary clubhouse, a modern saloon for your grooming needs, a yoga zone, a swimming pool for you to rejuvenate, kid's play areas, and a shopping facility for daily necessities.

Parijatha Elite has everything you want for your home - accessible locality, world-class amenities, features that ensure the safety and security of your loved ones, and above all an outstanding project by a reputed developer.





- A well thought design
- A well connected location
- Flexible floor space
- Stunning elevation



## APPEALING LIFESTYLE AMENITIES

Parijatha Elite is a stunning modern architecture with contemporary elevation. This spacious and comfortable residential and commercial complex thoughtfully integrates functionality with modernity.

The efficiency of planning is evident as you step into your home. Each spacious room is bathed with abundant natural light and cool breeze. A balcony that overlooks the landscaped greens. High-end specifications, premium sanitary and electrical fittings and fixtures, wide corridors, ample parking space, well-lit common areas, CCTV & 24-hour security service are some of the desirable features that complete and complement Parijatha Elite.



ENTRANCE ARCH



CCTV SURVEILLANCE



LIFTS



CHILDREN PLAY AREA



PARKING



SENIOR CITIZEN SPACE



24/7 SECURITY



GENERATOR BACKUP



Credible promoters  
 Professional management  
 The trend setters  
 Driven by diligence



## AN AMICABLE & LAVISH LIFESTYLE

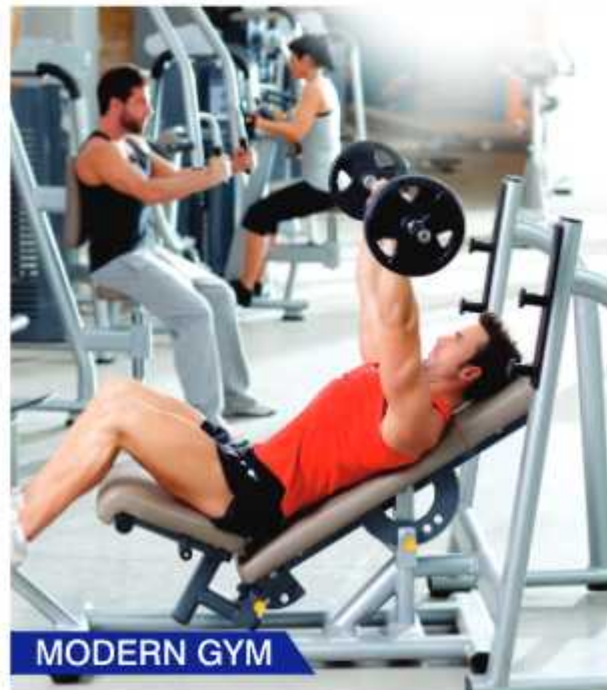
The centrally located state-of-the-art clubhouse at Parijatha Elite is aesthetically designed for its residents to unwind, relax and socialize.

It will have a wonderful swimming pool, neat pool decks, a spacious multi-purpose hall, well-equipped gymnasium, many indoor games, tennis and badminton court, large billiards table, yoga deck, and much more. The complex will also house a grocery store within the premises so you will never run out of daily essentials.

So no matter how you choose to relax and rejuvenate, the top-notch amenities at Parijatha Elite clubhouse is intended to make your every day exciting and exhilarating.



SWIMMING POOL



MODERN GYM



SUPER MARKET



TABLE TENNIS



YOGA ROOM



SALON & SPA



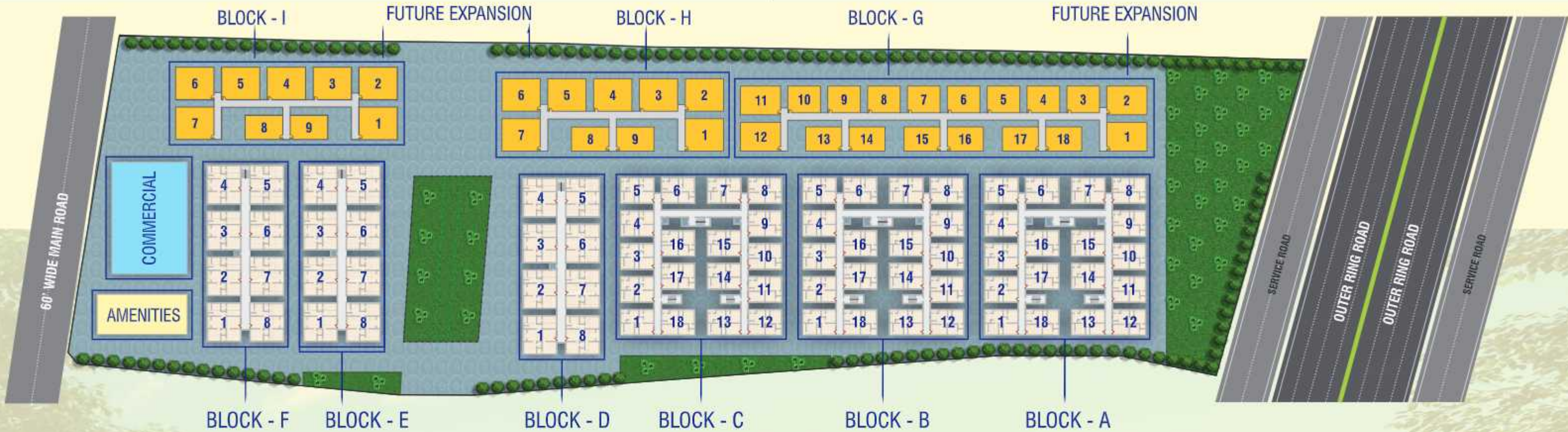
GUEST ROOM



INDOOR GAMES



Prime location  
Great connectivity  
Developed neighborhood  
Peaceful environ



### A PERFECT HOME HAVING ALL MODERN COMFORTS

From the distinctive architecture to the intricate detailing of each home, these warm and spacious flats are indeed the quintessence of the good life. Each home has been designed with ample open space and replete with world-class amenities and features. A large parking area, uninterrupted power

supply, and 24-hour security are just some of the features of this premier project. Built to last using modern construction techniques, safety regulations, and perpetuity of essential services like water and electricity backup for common areas as well as every living quarter.

### FEATURES

- Grand Entrance Gate
- Earthquake Resistant Design
- Maximum Utilization of Space
- Excellent Ventilation
- Spacious Parking
- Spacious Flats
- Generator Backup
- Advanced Security
- CCTV Surveillance
- Rain Water Harvesting
- Children Play area
- Avenue Plantation
- Appealing exteriors
- Spacious Driveway
- Modern Lifts
- Clear Title
- HMDA Approved
- Vaasthu Compliant
- S + 5 Upper Floors
- 390 Units
- 180 Units - Future Expansion
- Clubhouse
- Signages & Direction
- Maintenance Office



# 3D VIEW



## TYPICAL FLOOR PLAN



BLOCK - A, B & C		WEST FACE	2 BHK
1, 2	PLINTH	880.00	
3, 4	COMMON	220.00	
5, 7			
13, 14, 15	TOTAL AREA	1100.00	



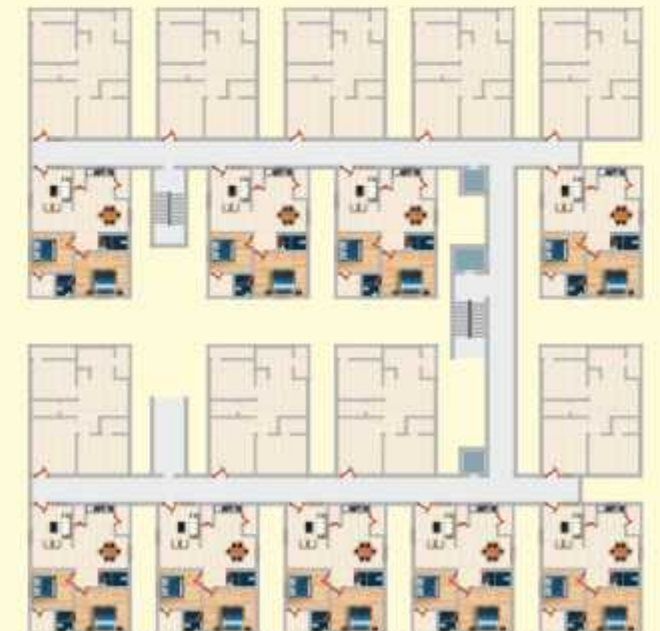
# 3D VIEW



## TYPICAL FLOOR PLAN



BLOCK - A, B & C		EAST FACE	2 BHK
6, 8	PLINTH	880.00	
9, 10	COMMON	220.00	
11, 12			
16, 17, 18	TOTAL AREA	1100.00	



# 3D VIEW



## TYPICAL FLOOR PLAN



<b>BLOCK D, E F</b>	<b>WEST FACE</b>		<b>3 BHK</b>
	1	PLINTH	1320.00
	2	COMMON	330.00
	3	TOTAL AREA	1650.00



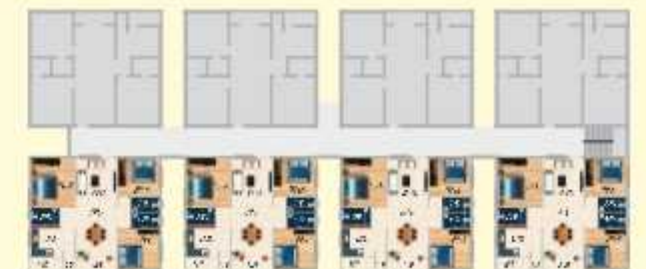
# 3D VIEW



## TYPICAL FLOOR PLAN



<b>BLOCK D, E F</b>	<b>EAST FACE</b>		<b>3 BHK</b>
	5	PLINTH	1320.00
	6	COMMON	330.00
	7	TOTAL AREA	1650.00







- Exquisitely planning
- Branded fittings
- 12 lifts
- Proper ventilation



## A RICH & WHOLESOME EXPERIENCE

An ideal lifestyle has a varied selection of relaxation and recreational opportunities. Parijatha Elite true to its name pampers its residents with a multitude of leisure amenities. Planned for every member of the family, the sprawling clubhouse at Parijatha Elite assures you exhilarating and memorable moments that you would love to cherish forever. Designed to be the pivotal part of the Parijatha Elite community, the clubhouse has the best of recreational amenities that will set your spirits free. Swimming pool with pool decks, indoor and outdoor sports, gymnasium, yoga room, etc. There is something for everyone here.



## SPECIFICATIONS



**STRUCTURE**  
RCC



**SUPER STRUCTURE**  
Red Burnt Brick/Aerocon walls in CM with 9" thick outside Walls and 4 1/2" thick internal walls.



**FLOORING**  
Vitrified Tiles in hall and dining, various sizes in Bedroom, Ceramic flooring in bath rooms, 3' height ceramic tile dadoing in wash area.



**KITCHEN**  
2' height ceramic/glazed tiles dado.



**MAIN DOOR**  
Teak wood frame with Teak wood Shutter.



**TOILET**  
Glazed tiles dado up to 6'-00" height with white mixtures. One toilets will have wash basin, EWC wall mixture point, shower point, Geyser point, 2nd Toilet contains one EWC, Wall mixture point and Shower point and provision for exhaust fan.



**WINDOWS**  
UPVC



**DOORS**  
Medium Teak V/ood Frame with flush shutters.



**ELECTRICAL**  
Concealed copper wiring in PVC conduits with Modular Switches, adequate points like fan point, T.V. Point and 15A/5A power Plugs.



**LIFT**  
Six passenger lift of reputed make.



**WATER SUPPLY**  
Bore-well water from overhead tank.



**PAINTING**  
Alltek Lappum finish for all internal walls and ceiling.



**BACKUP GENERATOR**  
Power back up for lift and common area.



**COMMON AREA**  
Granite stone in Common area and Stair Case.

## ONGOING PROJECTS



**GATED COMMUNITY** | **150 FLATS** | **2 RESIDENTIAL TOWERS** | **MODERN CLUBHOUSE**



**GATED COMMUNITY** | **320 FLATS** | **7 RESIDENTIAL TOWERS** | **MODERN CLUBHOUSE**



**GATED COMMUNITY** | **642 FLATS** | **ONE COMMERCIAL BLOCK** | **9 RESIDENTIAL TOWERS** | **MODERN CLUBHOUSE**

**PARIJATHA**  
HOME & DEVELOPMENTS PVT. LTD.  
PRESENTS

an attractive landmark setting benchmark

An ISO 9001:2008 Company

**PARIJATHA**  
**ICON**  
@ SHAMIRPET

2 & 3 BHK AFFORDABLE LUXURY APARTMENT GATED COMMUNITY

**GATED COMMUNITY** | **1799 FLATS** | **12 RESIDENTIAL TOWERS** | **2 MODERN CLUBHOUSE**

### UPCOMING PROJECTS

**ONGOING PROJECTS**

**PARIJATHA**  
**ICON-II**  
@ SHAMIRPET

**GATED COMMUNITY** | **800 FLATS** | **7 RESIDENTIAL TOWERS** | **MODERN CLUBHOUSE**

**Parijatha's**  
**Armour City**  
@ POKHARA 3 STREET, SHAMIRPET

**GATED COMMUNITY** | **235 FLATS** | **2 RESIDENTIAL TOWERS** | **MODERN CLUBHOUSE**

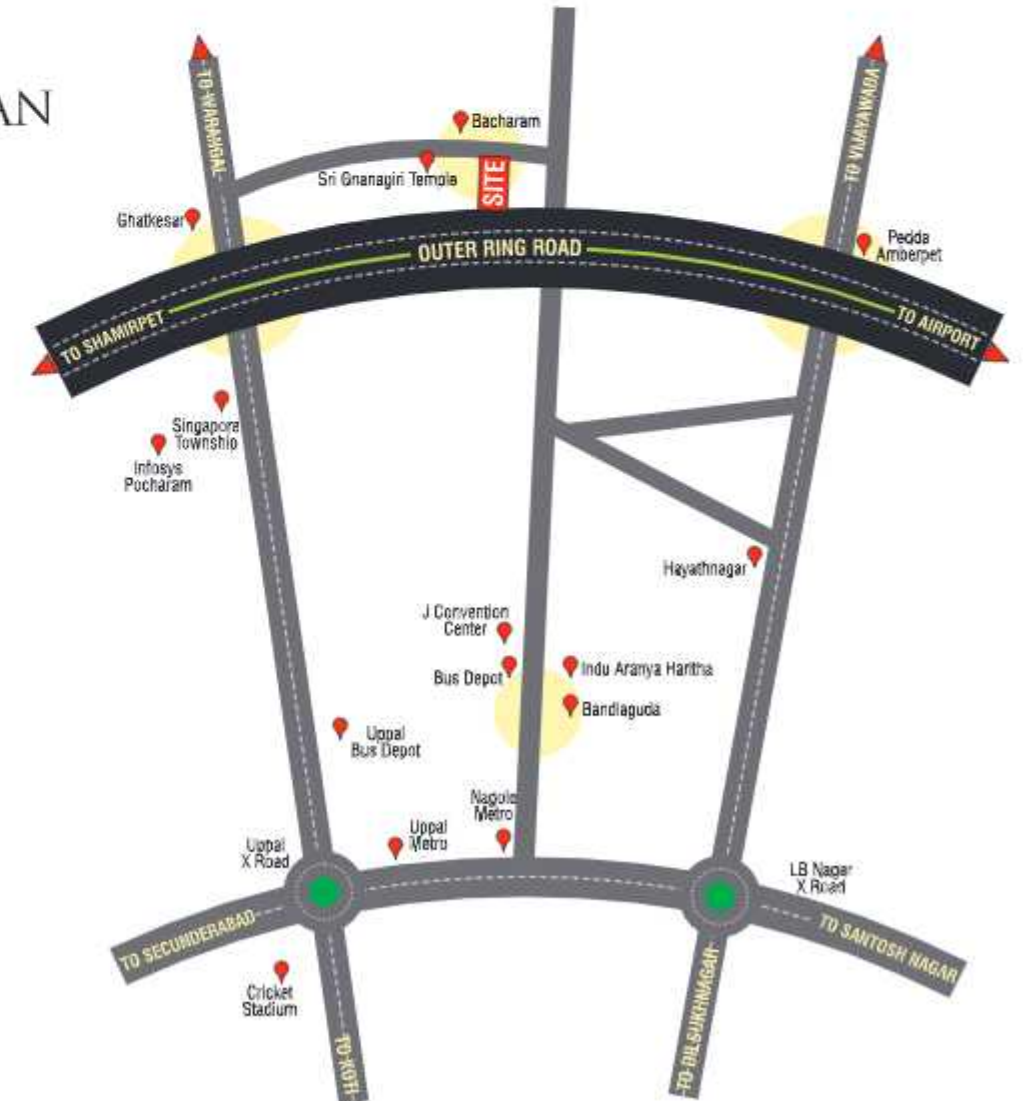
## A PLUSH & PROMINENT ADDRESS

Strategically located in a peaceful suburb near Ghatkesar, Parijatha Elite is just a few minutes off the Outer Ring Road. The locality is well connected to the rest of the city via a strong network of roadways and highways. Though away from the maddening rush, you are still close to prestigious residential developments, high profile commercial sectors, quality healthcare centers, and educational institutions. Shopping centers and entertainment zones are not far off. Transport mediums are easy to find. The presence of good infrastructure has transformed this locale into one of the most preferred residential locality.



## LOCATION PLAN

not to scale



**PARIJATHA'S**  
**GANGA VALLEY**  
@ ADIBATLA



# PARIJATHA ELITE

AT BACHARAM



**hmda**  
Growing Global  
038188/GHT/R1/U6/  
HMDA/16082020



**TS RERA**  
No. P02400003096

BUILDERS & DEVELOPERS



**PARIJATHA**  
HOMES & DEVELOPERS PVT. LTD.  
*The Honest Realtors*  
An ISO 9001:2005 Company

Corporate Office : 1st Floor, Meenakshi House, Road No. 7,  
Beside Ratnadeep Supermarket, Banjara Hills, Hyderabad - 34.

Website : [www.parijathahomes.com](http://www.parijathahomes.com)

Contact : +91 40 4346 2069 / [parijathahomes45@gmail.com](mailto:parijathahomes45@gmail.com)

**TOLL FREE NO. - 1800 5720 599**

For Details Please contact :

ARCHITECTURAL  
CONSULTANTS



**slick architects**  
Architectures & Interiors

Swastik Plaza, 401,  
Above Himalaya Book World,  
Sanjeeva Reddy Nagar, Hyderabad,  
Telangana State - 500 038, INDIA.  
[www.slickarchitects.com](http://www.slickarchitects.com)

CONCEPT,  
DESIGN & PRINT  
**CRYSTAL  
COMMUNICATIONS**  
M - +91 98461 53944

Note : This Brochure is only a conceptual presentation of the project and not a legal offering. The Builders & Promoters have right to make changes in elevation and specifications as deemed fit.