



PARIJATHA
HOMES & DEVELOPERS PVT. LTD.
PRESENTS

an attractive landmark
setting benchmark



APPROVED

HMDA FILE NO.
037128/MED/R1/U6/HMDA/06072020



An ISO 9001:2005 Company

PARIJATHA
ICON
@ SHAMIRPET

2 & 3 BHK AFFORDABLE
LUXURY APARTMENT
GATED COMMUNITY

PARIJATHA
Icon
@ SHAMIRPET

2 & 3 BHK AFFORDABLE
LUXURY APARTMENT
GATED COMMUNITY



PARIJATHA ICON is an architectural marvel, inhabiting C+G+9 floors comprising of 1799 exquisitely designed residential flats, to suit the buyer's taste and requirement. The luxurious 2 and 3 bedroom apartments are superbly designed to not only ensure optimum utilization of space but also cross ventilation. Finished to perfection, the construction is of immaculate quality, and every little detail is well taken care of. Aesthetically and functionally a class apart, these homes are the result of some fine architectural designing that has skillfully taken into account the surroundings they are going to come up in. **PARIJATHA ICON** encompasses serene surroundings, the aesthetic combination of innovative design, and robust construction.

Introducing a new standard of living - peaceful & uncomplicated.
Homes that promise the finest living experience.

GATED | **1799** | **12 RESIDENTIAL** | **2 MODERN**
COMMUNITY | **FLATS** | **TOWERS** | **CLUBHOUSES**

- A well thought design
- A well connected location
- Flexible floor space
- Stunning elevation



PARIJATHA
ICON
@ SHAMIRPET

2 & 3 BHK AFFORDABLE
LUXURY APARTMENT
GATED COMMUNITY

Every home extrudes beauty, comfort and class

The meticulously designed apartment will be constructed over a wide area surrounded by elegantly landscaped greenery. Each floor is designed to provide ample space and openness for splendid living arrangements. Each home will be built with the finest material and designed to compliment your lifestyle.

Parijatha ICON is a truly feature-rich apartment complex, allowing the owner to feel genuinely exhilarated. With advanced security that includes CCTV cameras at important points, Parijatha ICON promises absolute safety. With its global standard of living comforts, this project will truly be a world apart.

Parijatha ICON epitomises a unique balance between tradition and modernity.

Features

- Exquisitely planning
- Branded fittings
- 24 lifts
- Proper ventilation
- Spacious flats
- Spacious driveway
- Intercom facility
- Appealing exteriors
- 24/7 Security
- CCTV Surveillance
- Hassle free transaction
- On time delivery
- Credible promoters
- Driven by diligence
- Professional management
- The trend setters

an apartment isn't just a home.
it is a celebration of life.



Experience the transition from stress to tranquillity.
Top-notch features that radiate modern luxury & comfort.



PARIJATHA
ICON
@SHAMIRPET

2 & 3 BHK AFFORDABLE
LUXURY APARTMENT
GATED COMMUNITY



Conceived & designed to create a world-class living habitat, Parijatha Icon at Shamirpet is set on a 21.5 acres, of unpolluted land. This stunning apartment complex offers Cellar + Ground + 9 Upper Floors of 1799 luxurious homes. Set amidst landscaped greens, PARIJATHA ICON comprises of 12 residential blocks of 2 and 3 bedroom homes, and classy two clubhouses that extrude exclusivity.

Indulge in the state-of-the-art amenities provided here. Contemporary 2 clubhouses with a provision for modern saloon for your grooming needs, a yoga zone, a swimming pool for you to rejuvenate, kid's play areas, and a shopping facility for daily necessities.

PARIJATHA ICON has everything you want for your home - accessible locality, world-class amenities, features that ensure the safety and security of your loved ones, and above all an outstanding project by a reputed developer.



- Exquisitely planning
- Branded fittings
- 24 lifts
- Proper ventilation

GATED COMMUNITY | **1799** FLATS | **12** RESIDENTIAL TOWERS | **2** MODERN CLUBHOUSES

A minimal, clean aesthetic design creates a striking contemporary effect.
A timeless design coupled with great planning and execution.



PARIJATHA
ICON
@ SHAMIRPET

2 & 3 BHK AFFORDABLE
LUXURY APARTMENT
GATED COMMUNITY

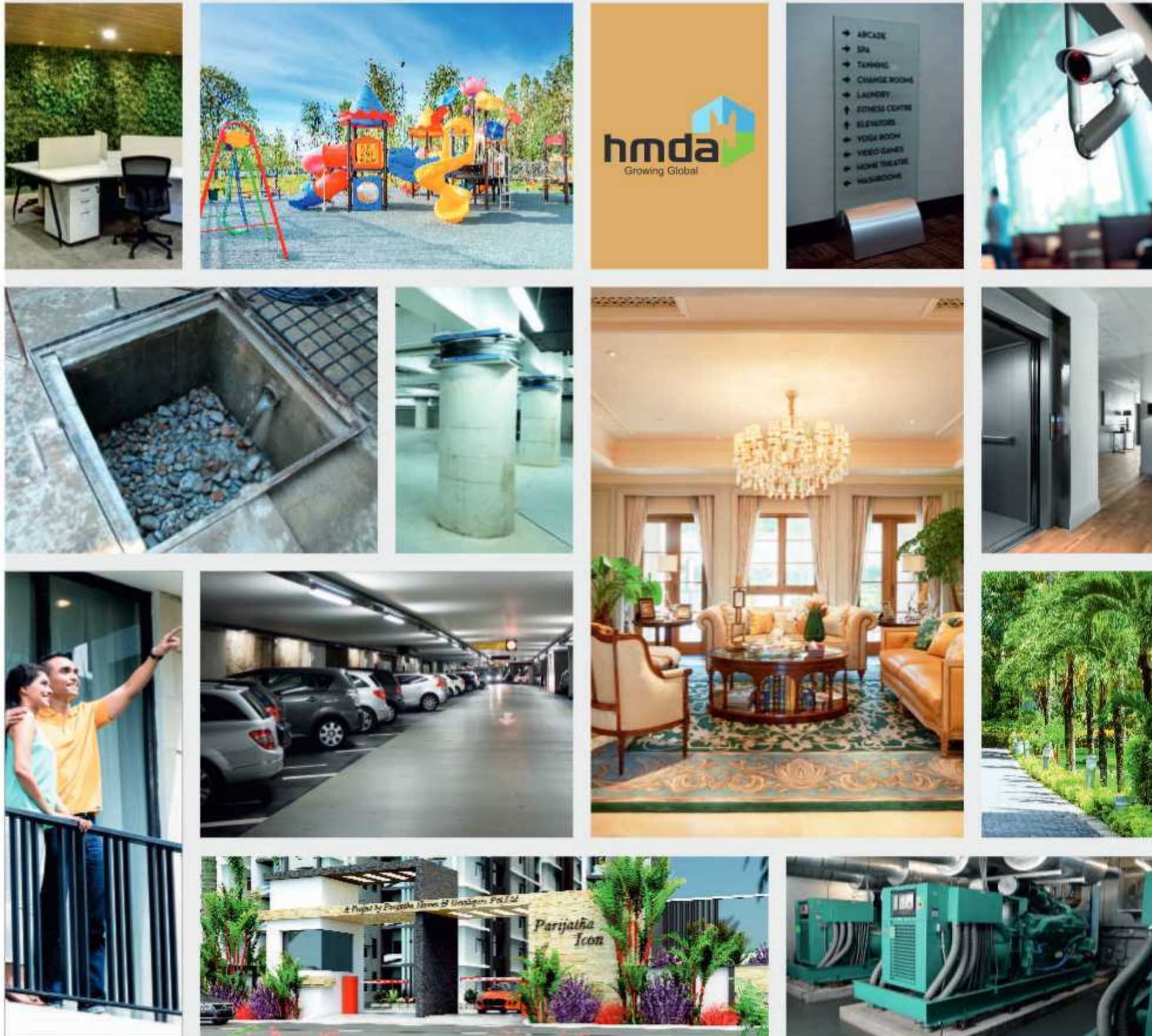
A perfect home having all modern comforts

From the distinctive architecture to the intricate detailing of each home, these warm and spacious flats are indeed the quintessence of the good life. Each home has been designed with ample open space and replete with world-class amenities and features. A large parking area, uninterrupted power supply, and 24-hour security are just some of the features of this premier project. Built to last using modern construction techniques, safety regulations, and perpetuity of essential services like water and electricity backup for common areas as well as every living quarter.

Parijatha ICON is a truly feature-rich apartment complex, allowing the owner to feel genuinely exhilarated. It epitomises a unique balance between tradition and modernity.

Features

- Vaasthu Compliant
- Grand Entrance Gate
- Earthquake Resistant Design
- Maximum Utilization of Space
- Excellent Ventilation
- Spacious Parking
- Generator Backup
- Modern Lifts
- CCTV Surveillance
- Rain Water Harvesting
- Clear Title
- HMDA Approved
- C+G+9 Upper Floors
- 1799 Units
- Clubhouse - A
- Clubhouse - B
- Children Play area
- Avenue Plantation
- Signages & Direction
- Maintenance Office
- Sewage Treatment Plant



An enticing and elegant living space that extrudes comforting warmth. Amenities that are steeped in functionality and accentuate the luxurious feeling.

**PARIJATHA
ICON**
@ SHAMIRPET

2 & 3 BHK AFFORDABLE
LUXURY APARTMENT
GATED COMMUNITY



**A perfect place having
an amicable & lavish lifestyle**

The centrally located state-of-the-art clubhouse at Parijatha ICON is aesthetically designed keeping in mind every member of your family that a visit to the clubhouse will be truly relaxing, refreshing, unwind, socialize & invigorating.

It will have a wonderful swimming pool, neat pool decks, a spacious multi-purpose hall, well-equipped gymnasium, many indoor games, tennis and badminton court, large billiards table, yoga deck, and much more. The complex will also house a grocery store within the premises so you will never run out of daily essentials.

So no matter how you choose to relax and rejuvenate, the top-notch amenities at Parijatha ICON clubhouse is intended to make your every day exciting and exhilarating.

CLUBHOUSE Features

- Entrance Lobby & Reception
- Swimming Pool
- Multi-purpose Hall
- Gymnasium
- Indoor Games
- Board Games
- Table Tennis
- Billiards
- Basketball Court
- Yoga & Aerobics
- Meditation Room
- Spa /Sauna Facility
- Shuttle Court
- Banquet Hall
- Guest Rooms
- Party Lawns
- Library
- Walking Track

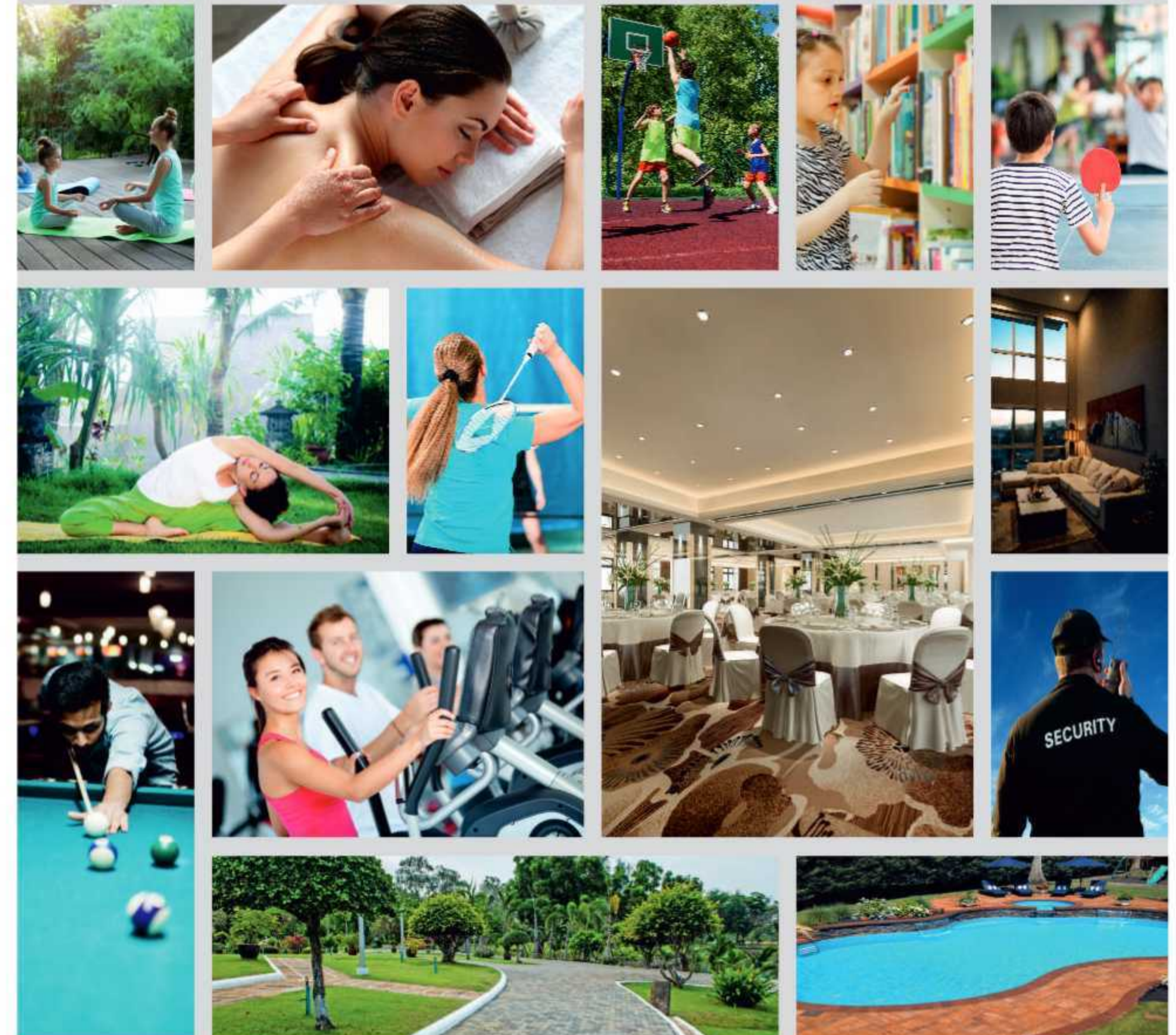


CLUB HOUSE - A

Strengthen familial bonds; Rendezvous with friends;
Or simply sit back and watch the world go by.
The clubhouse - The ultimate place for an exceptional leisure indulgence.



CLUB HOUSE - B





PARIJATHA
ICON
 @SHAMIRPET

2 & 3 BHK AFFORDABLE
 LUXURY APARTMENT
 GATED COMMUNITY

SPECIFICATIONS

STRUCTURE

Reinforced Concrete Construction (RCC)

SUPER STRUCTURE

Red Burnt Brick / Aerocon / Cement / Flyash Walls in Cement Mortar with 9" thick outside Walls and 4 1/2" thick internal walls.

MAIN DOOR

Teak Wood frame with Teak Wood Shutter.

DOORS

Medium Teak Wood Frame with Flush Shutters.

WINDOWS

UPVC

FLOORING

Vitrified Tiles - 2' x 2' in Hall, Dining, Bedroom & Kitchen, Ceramic Flooring in Bath Rooms, 3' Height Ceramic Tile dadoing in Wash Area.

COMMON AREA

Non slippery tiles in Common Area and Stair Case.

ELECTRICAL

Concealed Copper Wiring in PVC Conduits with Modular Switches, Adequate Points like Fan point, TV Point and 15A/5A Power Plugs.

KITCHEN

Granite platform - 2' Height Ceramic / Glazed Tiles Dado above kitchen platform.

TOILET

Glazed Tiles Dado up to 6'-0" Height with Wall Mixtures. One Toilet will have Wash Basin, EWC, Wall Mixture point, Shower point, Geyser point & 2nd Toilet contains one EWC, Wall Mixture point and Shower point and provision for Exhaust Fan.

PAINTING

Alltek Lappum finish for All Internal Walls and Ceiling

WATER SUPPLY

Bore-well Water from Overhead Tank

LIFT

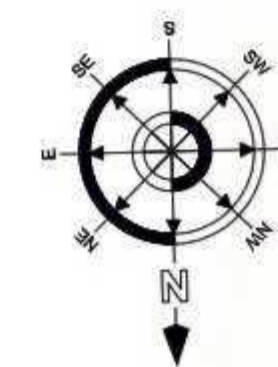
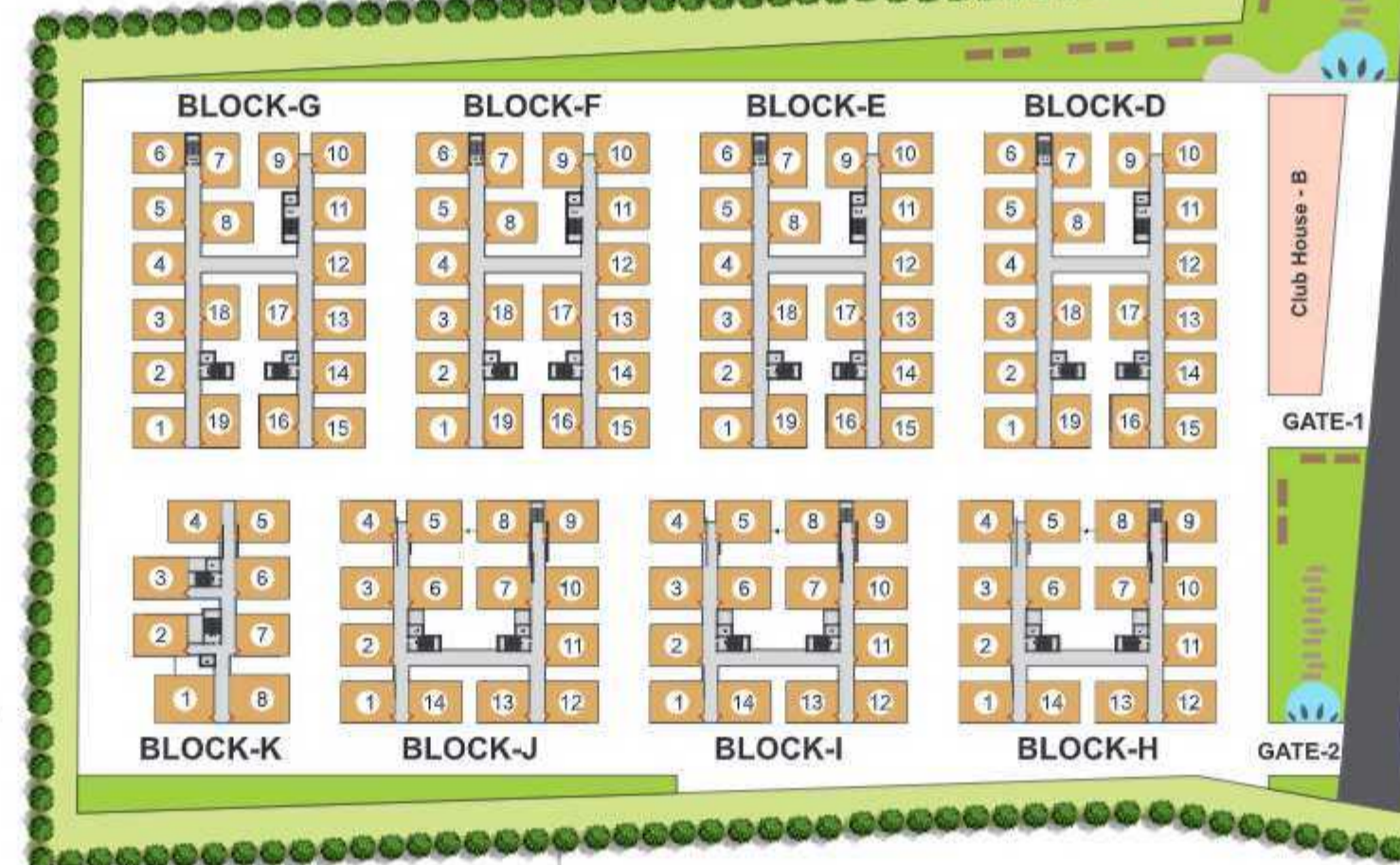
Six Passenger Lift of reputed make

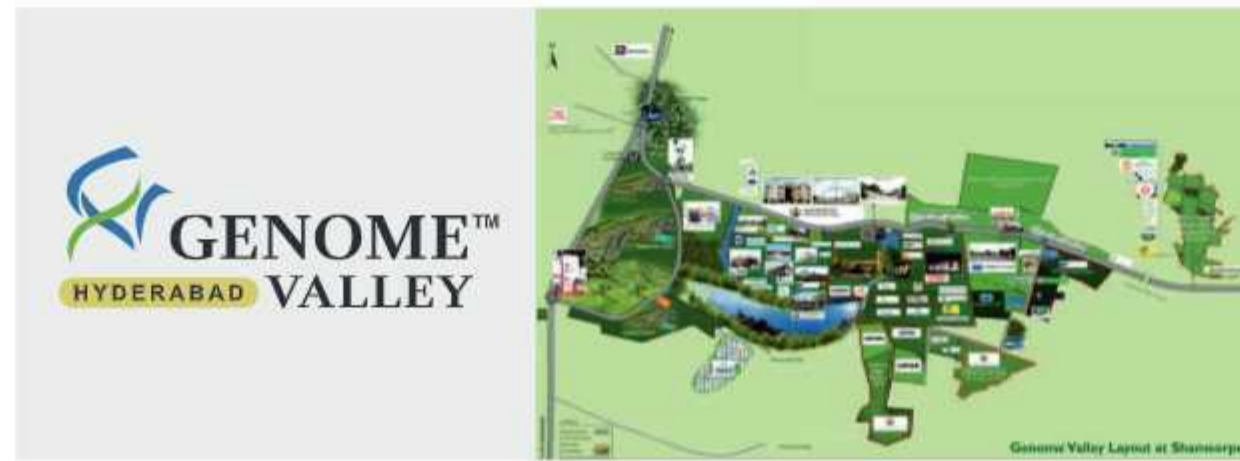
BACKUP GENERATOR

Power back up for Lift and Common Area.



HMDA FILE NO. 037128/MED/R1/U6/HMDA/06072020





PARIJATHA
ICON
@SHAMIRPET

2 & 3 BHK AFFORDABLE
LUXURY APARTMENT
GATED COMMUNITY

PARIJATHA ICON is Strategically located in a peaceful suburb near Shamirpet, It is just a few minutes off the Outer Ring Road. The locality is well connected to the rest of the city via a strong network of roadways and highways. Though away from the maddening rush, you are still close to prestigious residential developments, high profile commercial sectors, quality healthcare centers, and educational institutions. Shopping centers and entertainment zones are not far off. Transport mediums are easy to find. It gives a distinct advantage to dreams as **PARIJATHA ICON** is ideally located in a calm hygienic surroundings, sophisticated neighborhood, idyllic ambience and scenic visual treats and the presence of good infrastructure has transformed this locale into one of the most preferred residential locality.

OPPORTUNE NEIGHBORHOOD

PROXIMITY TO KEY FACILITIES

Conectivity

- Beside Leonia Resorts & Carnival Multiplex
- 2 min drive from Outer Ring Road (ORR)
- 5 min - main road Rajiv Rahadari Highway
- 10 min from Genome Valley
- 10 min from IKP Knowledge Park
- 15 Km from ECIL & Kapra
- 30 min drive from Secunderabad (JBS)
- Site Facing to 100ft road

Educational Institutions

- St. Paul's International School
- Shantiniketan Vidyalaya
- Excellencia Infinium School
- Ivy League Academy
- Evergreen High School
- Pebble Creek Life School
- Diksha - A Waldorf School
- BITS Pilani, Hyderabad Campus
- Excellencia Junior College
- IHM Leo Academy of Hospitality and Tourism Management
- Shameerpet ITI college
- Amena Institute of Technology
- Vishwa Vishwani School of Business
- Institute of Public Enterprise
- NICMAR

Hospitals

- Medi Citi Institute of Medical Sciences
- Swaasth Ayush
- Mediciti Rural Health Training Centre
- GC Hospital
- Asha Hospital

Resorts

- Leonia Holistic Destination
- Krishna's serene
- Celebrity Resort
- Aranya Resort
- Aalankrita Resort And Convention
- Forest Ridge
- Silent Wald Resort
- Corporate Outings Summer Green Resort

Corporate Offices

- Genome Valley
- IKP Knowledge Park
- ECIL Electronics Corporation of India Limited
- Major Corporate offices are within easy reach via the Outer Ring Road
- DRDO

Near-by attractions

- Shamirpet lake
- Shamirpet Deer Park
- Kandlakoya Oxygen Park
- Konda Pochamma Sagar Reservoir

LOCATION PLAN | not to scale



Prime location
Great connectivity
Developed neighborhood
Peaceful environ

GATED COMMUNITY | **1799 FLATS** | **12 RESIDENTIAL TOWERS** | **2 MODERN CLUBHOUSES**

Suburban living away from pollution and traffic noise.
An unbeatable location in a vibrant neighbourhoo where life revolves around you.



a unique contemporary home
in a world-class setting.

Contributing 19 years of illustrious industry the Parijatha group is a trusted entity today in the real estate market and has carved a niche for itself as the most reliable developers of residential and commercial projects in and around the city. Parijatha group has deservedly scaled the heights to be at the pinnacle of the real estate industry. Driven by passion, the group aims to create some of the most exciting landmarks and delivering the most contemporary and innovative projects that excel with an international standard in both quality and design. Spearheaded by a futuristic vision by its directors, the group is set to change the real estate industry. With Parijatha Icon in Shamirpet, being the latest addition to its exclusive portfolio, the group has quite many projects in the pipeline. Nurturing a passion for creating comfortable homes, the group humbly presents a majestic residential complex spread across 21.5 acres, that is bound to pamper its residents with an elite lifestyle.

ONGOING PROJECTS



GATED COMMUNITY | **150 FLATS** | **2 RESIDENTIAL TOWERS** | **MODERN CLUBHOUSE**



GATED COMMUNITY | **320 FLATS** | **7 RESIDENTIAL TOWERS** | **MODERN CLUBHOUSE**

GATED COMMUNITY | **1799 FLATS** | **12 RESIDENTIAL TOWERS** | **2 MODERN CLUBHOUSES**



2 & 3 BHK AFFORDABLE
LUXURY APARTMENT
GATED COMMUNITY



GATED COMMUNITY | **642 FLATS** | **ONE COMMERCIAL BLOCK** | **9 RESIDENTIAL TOWERS** | **MODERN CLUBHOUSE**

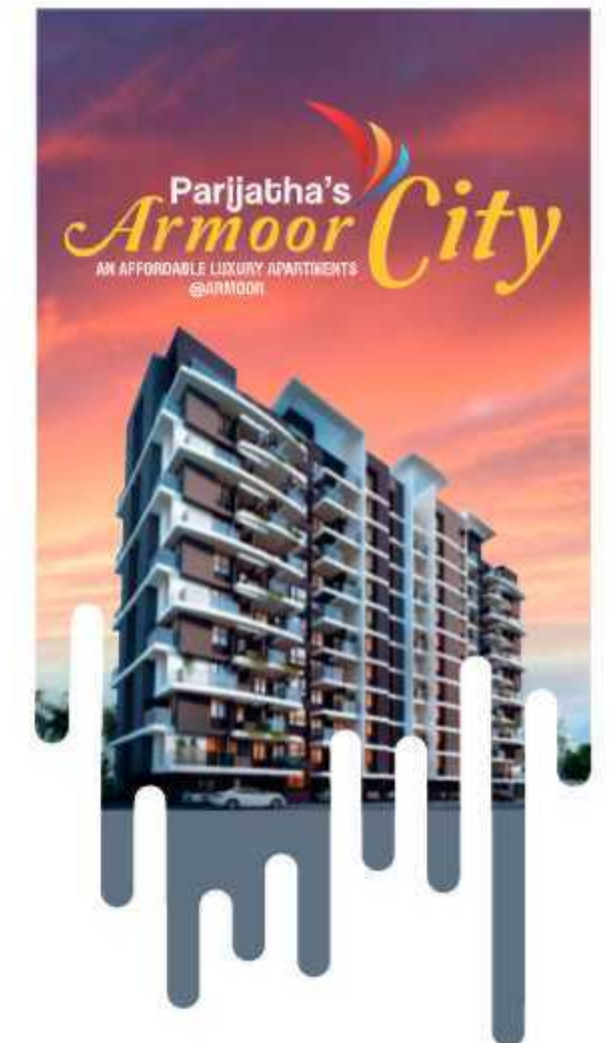


GATED COMMUNITY | **800 FLATS** | **7 RESIDENTIAL TOWERS** | **MODERN CLUBHOUSE**



GATED COMMUNITY | **390 FLATS** | **ONE COMMERCIAL BLOCK** | **6 RESIDENTIAL TOWERS** | **MODERN CLUBHOUSE**

GATED COMMUNITY
235 FLATS
2 RESIDENTIAL TOWERS
MODERN CLUBHOUSE



Creating living spaces with everything you will need to fully welcome life.
Each project is a work of art that's a treat to live in.

- Credible promoters
- Professional management
- The trend setters
- Driven by diligence

Building trust. Building relations.

Parijatha Homes & Developers has built itself a rich legacy in the real estate domain. It has over 2 decades of rich experience and has won accolades and appreciation from customers for its reliability, transparency and trust. The company's strict adherence to quality-benchmarks is what keeps customer satisfied. High standards and innovative thinking are propelling the company to dot the city's skyline with many beautiful landmarks.

An
ISO 9001:2005
Company



BUILDERS & DEVELOPERS



PARIJATHA
HOMES & DEVELOPERS PVT. LTD.

The Honest Realtors

An ISO 9001:2005 Company

Corporate Office : 1st Floor, Meenakshi House, Road No. 7,
Beside Ratnadeep Supermarket, Banjara Hills, Hyderabad - 34.

Regd. Office: Flat No 109, 1st Floor, GBS Enclave, Moti Valley,
Tirumalgherry, Secunderabad - 500015, Telangana.

Website : www.parijathahomes.com

Contact : +91 40 4346 2069 / parijathahomes45@gmail.com

TOLL FREE NO. - 1800 5720 599

Disclaimer: The contents provided in this brochure are intended for informational purposes only and are not intended to constitute an offer solicitation. We reserve our right to change or modify any information, material, data, floor plans, specification etc. Customers are responsible for seeking advice of professionals, as appropriate, regarding the information, opinions, advice or comments pertaining to the property and its development, the details of which are set out in the brochure. We make no representation and disclaim all warranties, whether express, implied or statutory, including but not limited to warranties as to accuracy, reliability, usefulness, completeness, merchantability or fitness of information for any particular purpose, not infringement and any damages ensuing thereby.



HMDA FILE NO. 037128/MED/R1/U6/HMDA/06072020

ARCHITECTURAL
CONSULTANTS



Swastik Plaza, 401,
Above Himalaya Book World,
Sanjeeva Reddy Nagar, Hyderabad,
Telangana State - 500 038, INDIA.
www.slickarchitects.com

CONCEPT,
DESIGN & PRINT
**CRYSTAL
COMMUNICATIONS**
M - +91 92461 53944

For Details Please contact :